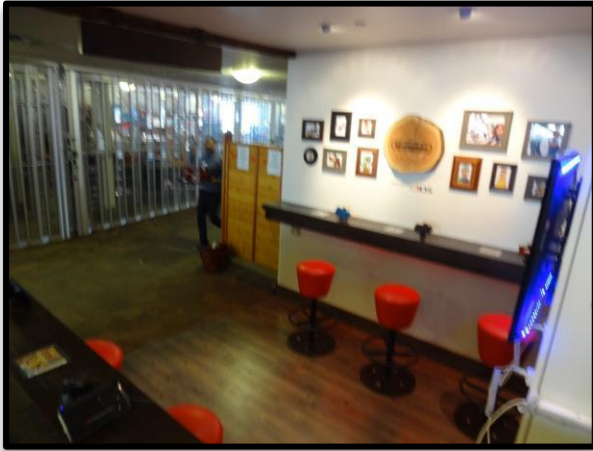


we {the collective}



"Working with WearMax was fantastic. We tested numerous coatings for our slip issue but none of them came close to the permanent solution achieved with WearMax."

Our installation conditions we're less than ideal with both being located on top of Whistler Blackcomb mountain but the WearMax team was punctual and professional at every step. The coating has now been installed for over 6 months and is showing no sign of letting up under the wear and tear of ski and snowboard boots."

Jeremy Burrows
We the Collective
for the Nintendo Lounges
at the top of Whistler/Blackcomb

